

NWS FORM E-5 <small>(11-88)</small> <small>(PRES. by NWS Instruction 10-924)</small>	U.S. DEPARTMENT OF COMMERCE NATIONAL OCEANIC AND ATMOSPHERIC ADMINISTRATION NATIONAL WEATHER SERVICE
MONTHLY REPORT OF HYDROLOGIC CONDITIONS	
TO: Hydrometeorological Information Center, W/OH2 NOAA / National Weather Service 1325 East West Highway, Room 7230 Silver Spring, MD 20910-3283	HYDROLOGIC SERVICE AREA (HSA) WFO Midland, Texas REPORT FOR: MONTH May YEAR 2025 SIGNATURE J. DeBerry In Charge of HSA DATE June 15, 2024

When no flooding occurs, include miscellaneous river conditions, such as significant rises, record low stages, ice conditions, snow cover, droughts, and hydrologic products issued (NWS Instruction 10-924)

☒ An X inside this box indicates that no river flooding occurred within this hydrologic service area.

May was fairly active as upper-level storm systems moved through West Texas and Southeast New Mexico, but most activity was severe weather, rather than hydrologic in nature. As a result, little flooding was observed and/or reported.

On May 27th, thunderstorms developed in Eddy County, and localized flooding result in some road closures there.

On the 29th, thunderstorms developed over Lea County and the northern Permian Basin during the evening. Multiple reports of flash flooding were reported in Dawson, Howard, and Lea Counties, prompting road closures. Water rescues at low water crossings were reported in Big Spring in Howard County, and floodwaters even got into an apartment building. Flash flooding was also reported on US Highway 67 west of Belding in Pecos County.

Despite the lack or reports, rainfall was fairly abundant.

Precipitation amounts from area ASOS's:

City	ASOS ID	May	April
Carlsbad, NM	KCNM	0.80"	T
Fort Stockton	KFST	1.08"	0.00"
Midland Int'l	KMAF	0.82"	0.47"
Odessa	KODO	0.98"	0.42"
Terrell County	K6R6	0.42"	0.00"
Wink	KINK	M	0.52"

Precipitation amounts from area AWOS's:

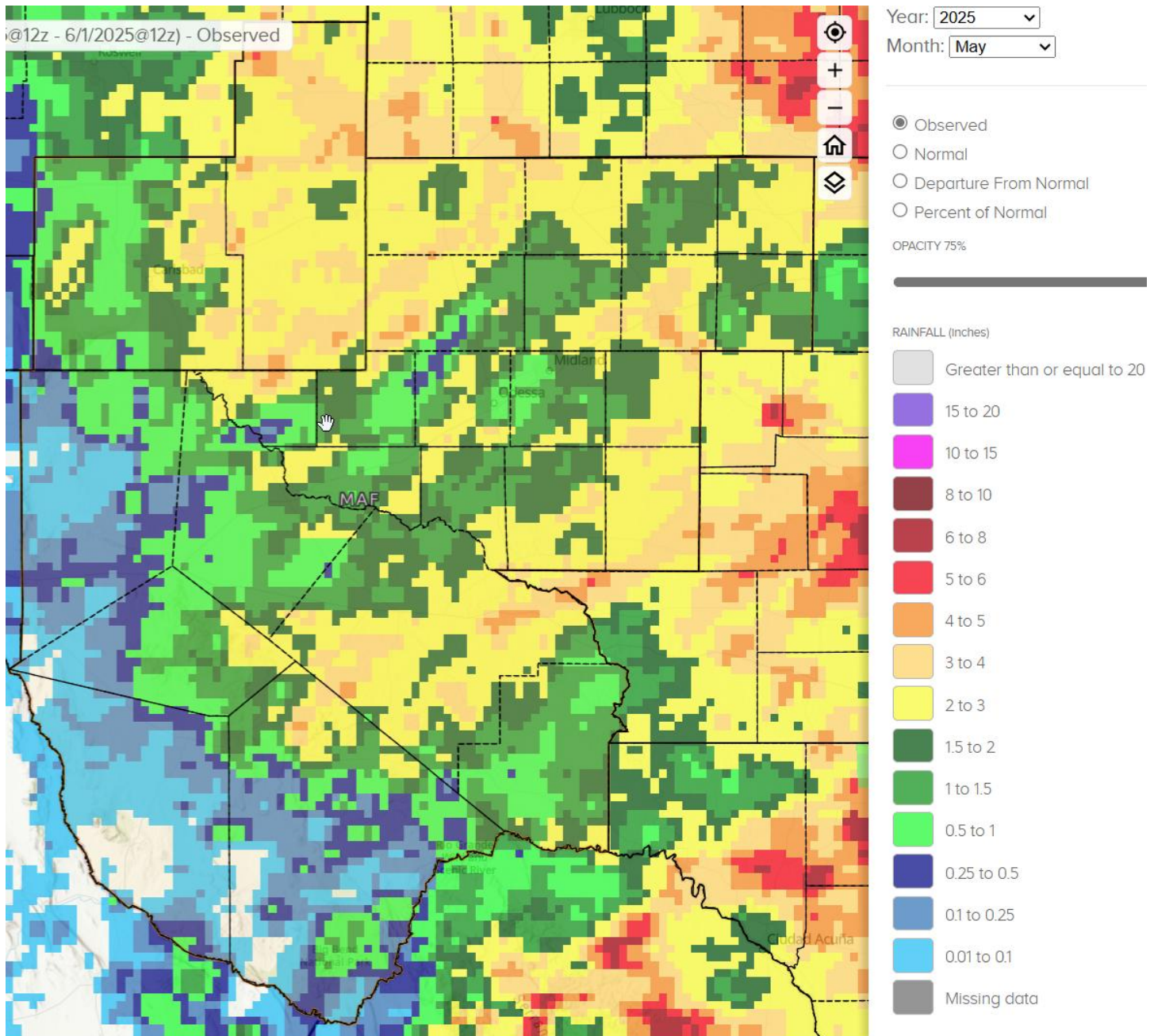
City	AWOS ID	June	May
Alpine	KE38	0.80	0.32"
Andrews County	KE11	0.98"	0.41"
Artesia, NM	KATS	0.44"	1.11'
Big Spring	KBGP	3.50"	0.57"

Culberson County	KVHN	0.26"	0.30"
Gaines County	KGNC	1.79"	0.67"
Lajitas	KT89	M	M
Lamesa Municipal	KLUV	1.14"	0.91"
Marfa	KMRF	M	M
Midland Airpark	KMDD	0.57"	0.44"
Pecos County	KPEQ	M	M
Presidio County	KPRS	0.00"	0.08"
Reagan County	KE41	3.76"	1.79"
Snyder	KSNK	1.33"	3.07"

Some other locations in the HSA that received notable amounts of precipitation for May were:

Welch, Dawson County	3.27"
Marathon 21N (Glass Mountain Ranch), Brewster County	3.30"
St. Lawrence, Glasscock County	3.41"
Tatum, Lea County	3.63"

77 locations reported rainfall for the month of May, for an HSA average of 1.27".



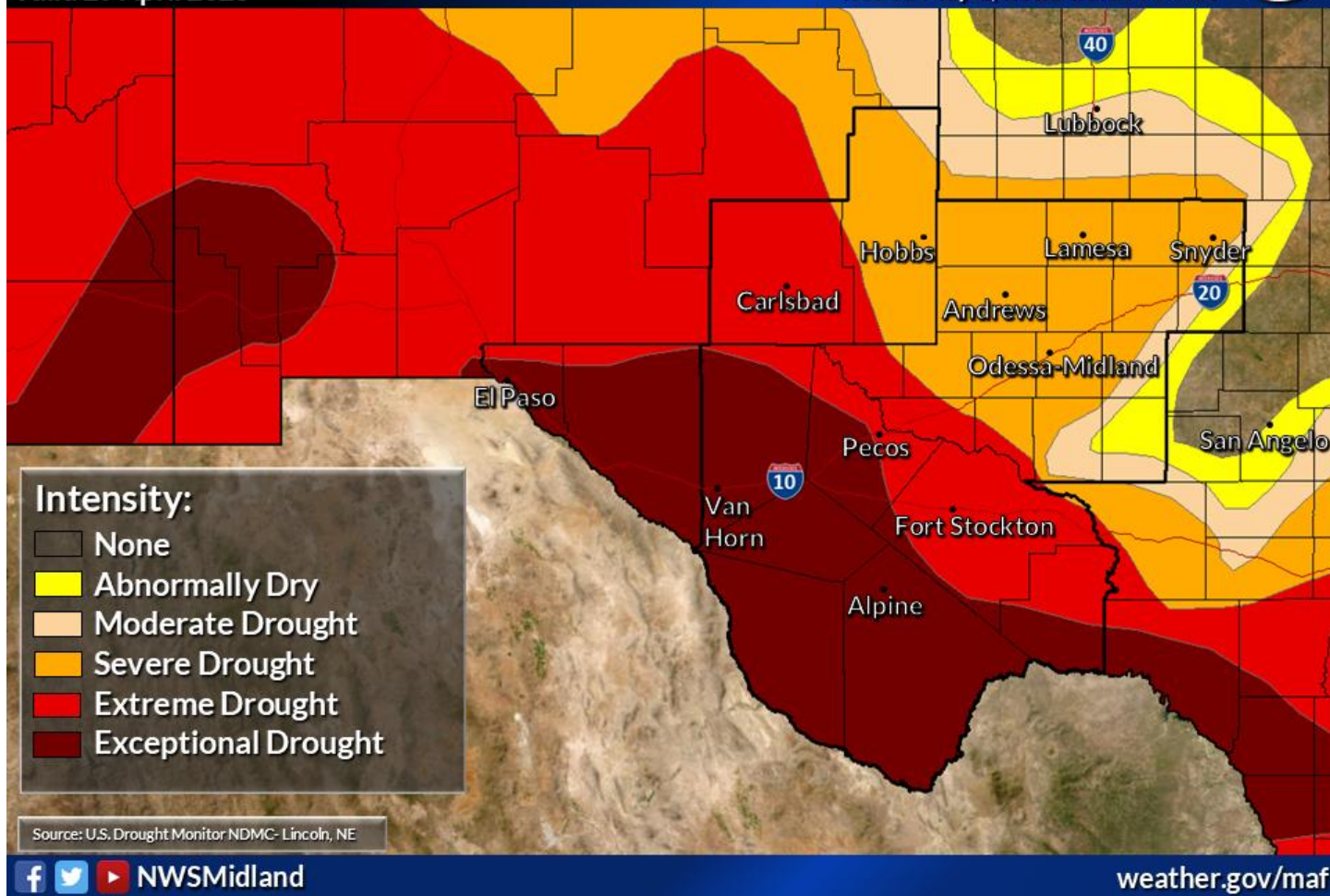
May Precipitation

Normal May precipitation for Midland International Air and Space Port is 1.57". Total precipitation for the year ending 1 June was 1.40", or 2.86" below normal.

Latest Drought Conditions

Valid 29 April 2025

Weather Forecast Office
Midland/Odessa, TX
Issued May 1, 2025 10:17 AM CT



Reservoir levels across the HSA averaged 55.4% of conservation capacity as of June 1st:

Reservoir (County, State)	June 1 Conserv Cap (%)	May 1 Conserv Cap (%)
JB Thomas (Scurry, TX)	36.6	37.9
Colorado City (Mitchell, TX)	67.4	69.8
Champion Creek (Mitchell, TX)	48.0	40.3
Natural Dam Salt Lake (Howard, TX)	48.4	48.4
Moss Creek (Howard, TX)	80.0	76.0
Brantley (Eddy, NM)	62.0	72.0
Avalon (Eddy, NM)	56.0	57.0
Red Bluff (Reeves, TX)	45.1	43.4

Non-Routine Products Issued for May:

Flash Flood Watches (FFA): 2
Flash Flood Warnings (FFW): 10
Flash Flood Statements (FFS): 10
Flood Advisories/Statements (FLS): 0

Flood Warnings (FLW): 0

Total Non-Routine Products Issued: 22

**cc: email: COE ABQ, HIC, IBWC ELP, IBWC PRD, LCRA, NWS ABQ, NWS EPZ, NWS LBB,
NWS MAF, NWS SJT, SRH, TAMU, TCEQ, USGS CNM, USGS SJT, WGRFC**